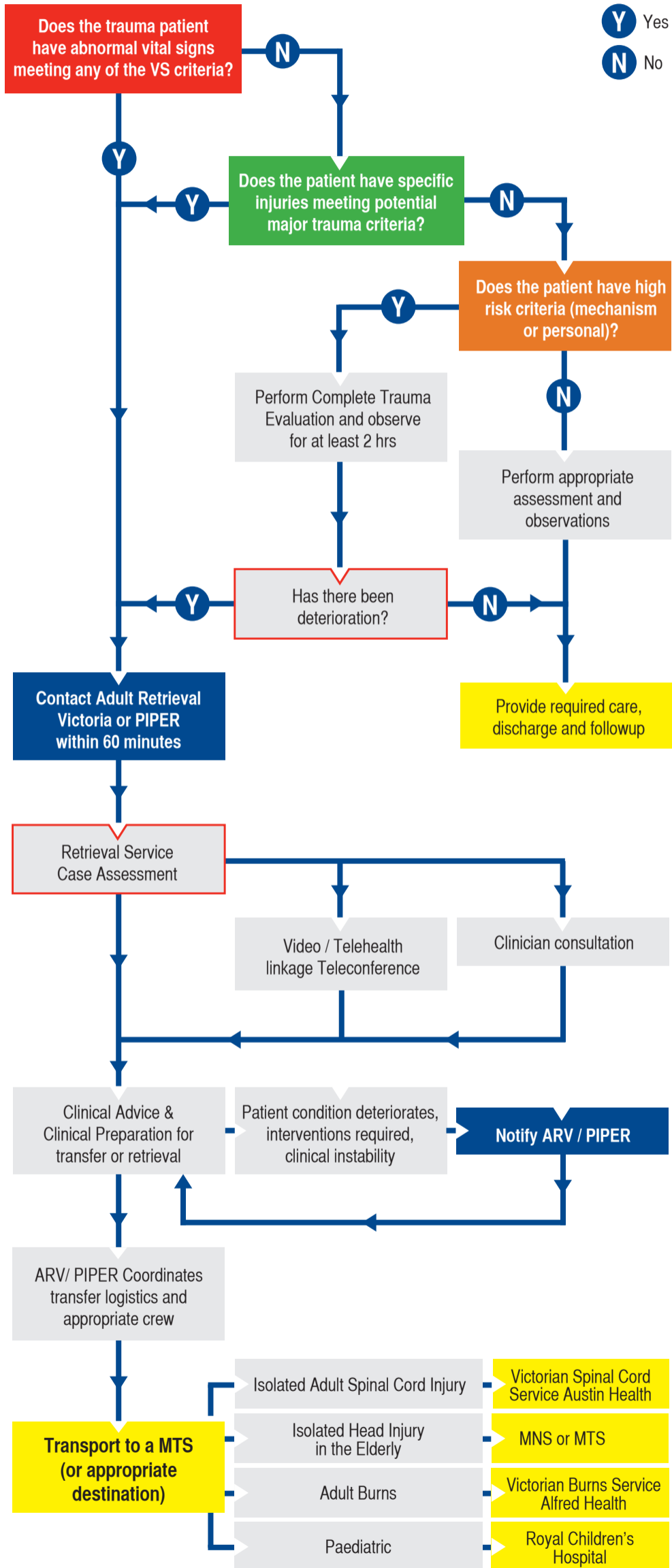


Inter-hospital Major Trauma Transfer



Inter-hospital Vitals Signs Major Trauma Criteria

Age	Term - 3 mths	4-12 mths	1-4 yrs	5-12 yrs	12+ yrs	Adult
HR	<100 or >180	<100 or >180	<90 or >160	<80 or >140	<60 or >130	<60 or >120
RR	>60	>50	>40	>30	>30	<10 or >30
BP sys	<50	<60	<70	<80	<90	<90
SpO ₂			<90%			<90%
GCS			<15			<13

Specific injuries – Major Trauma

All penetrating injuries (except isolated / superficial limb injuries)

Blunt injuries:

- Serious injury to a single body region such that specialised care or intervention may be required, or such that life, limb or long term quality of life may be at risk
- Significant Injuries involving more than one body region

Spinal trauma

- Significant spinal fracture
- Minor spinal cord or nerve root injury
- Presence of neurological deficits
- In isolated spinal cord trauma, the patient should be transferred from a primary hospital to the Victorian Spinal Cord Service at the Austin and Repatriation Medical Centre, paediatric patients should be transferred and managed at the Royal Children's Hospital

Specific Injuries:

- Limb amputations / limb threatening injuries
- Serious crush injury
- Major compound fracture or open dislocation
- Fracture to two or more of the following: femur / tibia / humerus
- Fractured pelvis

Paediatric Trauma

- Any of the above conditions when in children will initiate transfer

Obstetric Trauma

- Evidence of foetal distress
- Foetus beyond 24 weeks gestation
- Possibility of trauma to the uterus
- All obstetric major trauma patients should be transferred to the Royal Melbourne Hospital where they will have urgent obstetric assessment

Burns:

- Burns > 20% (adult) or 10% (child)
- Suspected respiratory tract burns
- High Voltage Electrical Injury

Neuro-trauma

- Neurological deficits
- Skull fracture
- Abnormal CT scan findings

High Risk Criteria for Major Trauma

- Ejection from vehicle
- Motor / cyclist impact > 30 kph
- Fall from height > 3 m
- Struck on head by object falling > 3 m
- Explosion
- High speed MCA > 60 kph
- Pedestrian impact
- Age > 50 / Age < 10
- Pregnant
- Significant comorbidity